

# Ceramco<sup>®</sup>3 SoftWear<sup>®</sup> ENAMELS



## Ceramco<sup>®</sup>3 SoftWear<sup>®</sup> Enamels

*Kinder to opposing dentition.*

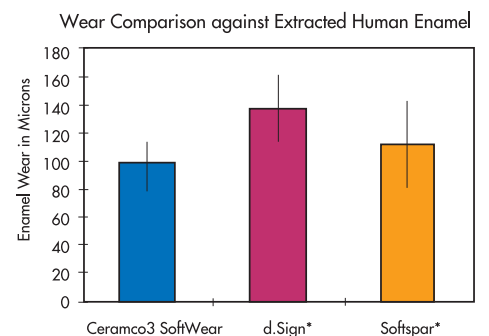
- Fine-grained leucite structure provides proven low wear characteristics.
- Available in 9 shades for excellent esthetic range.
- Same ease of use and handling characteristics as Ceramco<sup>®</sup>3 porcelain.
- Thermally stable over multiple firings.

Ceramco<sup>®</sup>3 is the name you know and trust for unmatched esthetics with excellent reliability and ease of use. That's why the Ceramco<sup>®</sup>3 SoftWear<sup>®</sup> Enamels are the ideal low-wear, natural enamel porcelains for your restorations. The SoftWear<sup>®</sup> Enamels can be used in thin or thick layers over the dentin to duplicate the vitality of natural teeth. (Super Clear, Light, Extra Light, Medium, Dark, White, Ivory, Violet, and Orange.)

*See the Ceramco<sup>®</sup>3 Directions for Use for recommended firing temperatures.*

*For more information about Ceramco<sup>®</sup>3 SoftWear<sup>®</sup> Enamels, call DENTSPLY Ceramco at 800-487-0100 or visit our website at [www.ceramco.com](http://www.ceramco.com) or [www.dentsply.com](http://www.dentsply.com).*

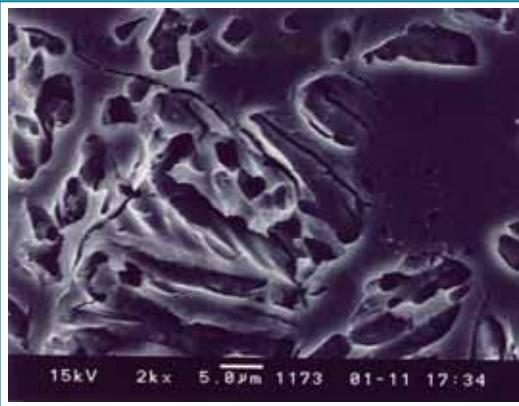
Ceramco<sup>®</sup>3 SoftWear<sup>®</sup> Enamels have a lower average wear against opposing natural dentition in comparison to d.Sign and Softspar enamels.\*



# Ceramco<sup>3</sup> SoftWear<sup>®</sup> ENAMELS

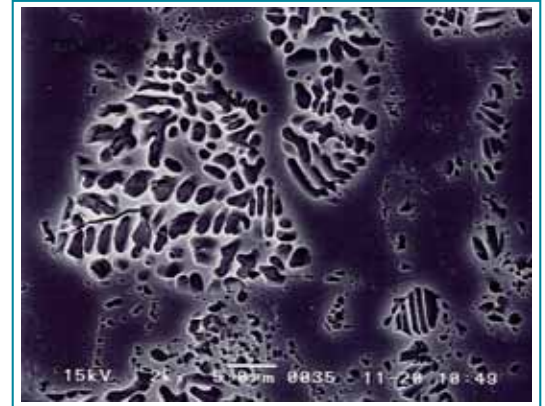


## Conventional Enamels



In comparison to conventional enamels that have leucite grain sizes in the range of 10-50 microns, Ceramco<sup>3</sup> SoftWear<sup>®</sup> enamels have a fine-grained leucite structure in the 2-10 micron size range.\*

## Ceramco<sup>3</sup> SoftWear<sup>®</sup> Enamels



Ceramco<sup>3</sup> SoftWear<sup>®</sup> Enamels are used exactly like the Ceramco<sup>3</sup> Natural Enamels and fire at the same temperatures. They can be used either as a full enamel overlay, or as an effect powder in specific areas. See the reference chart below for guidance.

Shade	Crystals used after base paste	Crystals used after shaded paste	SoftWear Enamel	Natural Enamel	Opal Effect Enamel	Margin Porcelain	Dentin Modifier	Stain
i1	White	White	Extra Light	Extra Light	Opal Light	i1	A1	Orange Tint
i2	White	White	Extra Light	Extra Light	Opal Light	i2	B1	Yellow Tint
i3	White	White	Extra Light	Extra Light	Opal Light	i1	A1	Orange Tint
i4	White	White	White	White	Opal White	i2	B1	Yellow Tint
i5	White	White	White	White	Opal White	i5	A1	Orange Tint
i6	White	White	White	White	Opal White	i5	B1	Yellow Tint
i7	White	White	White	White	Opal White	i5	A1	Orange Tint
i8	White	White	White	White	Opal White	i5	B1	Yellow Tint
A1	Medium	Light	Extra Light	Extra Light	Opal Light	A1	A1	Orange Tint
A2	Medium	Light	Extra Light	Extra Light	Opal Light	A1	A1	Orange Tint
A3	Medium	Light	Light	Light	Opal Light	A3	A1	Orange Tint
A3.5	Dark	Light	Light	Light	Opal Medium	A3	A3.5	Orange Tint
A4	Dark	Light	Light	Light	Opal Medium	A4	A3.5	Orange Tint
B1	Medium	Light	Extra Light	Extra Light	Opal White	B2	B1	Yellow Tint
B2	Medium	Light	Extra Light	Extra Light	Opal Light	B2	B1	Yellow Tint
B3	Dark	Light	Light	Light	Opal Light	A3	B3	Yellow Tint
B4	Dark	Light	Light	Light	Opal Light	A4	B3	Yellow Tint
C1	Medium	Light	Light	Light	Opal Light	C1	C1	Brown Tint
C2	Dark	Light	Light	Light	Opal Light	C1	C1	Brown Tint
C3	Dark	Light	Medium	Medium	Opal Medium	C3	C3	Brown Tint
C4	Dark	Light	Dark	Dark	Opal Medium	C3	C3	Brown Tint
D2	Medium	Light	Extra Light	Extra Light	Opal Light	C1	A1	Orange Tint
D3	Dark	Light	Light	Light	Opal Light	A3	B1	Yellow Tint
D4	Medium	Light	Medium	Medium	Opal Light	A3	C3	Orange Tint